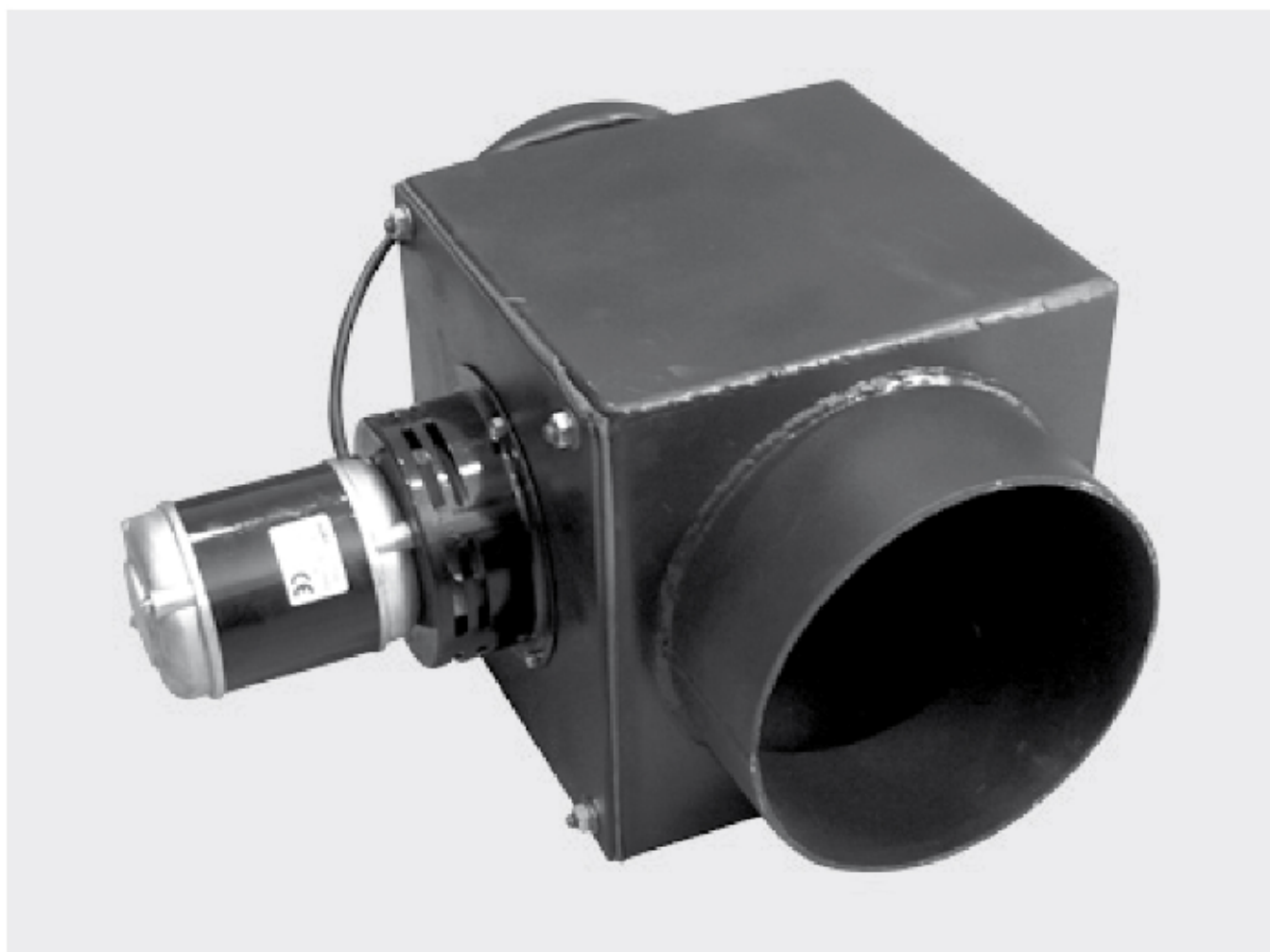


Manual

Exhaust chimney fan WKO 180, WKO 200, WKO 210 type



Contents

1. Fan's use	2
2. Procedure rule.....	2
3. Technical data	2
4. Fan choice	3
5. Montage and exploitation.....	3
6. Electrical connection	3
7. Conservation	3
8. Dealing with faults caused by wrong exploitation	4
9. End of using.....	4

1. Fan's use

Exhaust chimney fan's WKO type purpose is taking the fumes out of wood boiler. WKO type fans are characteristic for great efficiency, low volume and weight. It's brand new construction isn't common at Polish ventilation market yet.

2. Procedure rule

Exhaust chimney fan WKO type succours chimney flue while burning up in a natural thrust boiler or in a fan boiler. It's also helpful while fuel loading in the time of door opening. Both the functions are to prevent against smoke getting out of a boiler in low thrust time.



NOTICE!

Exhaust chimney fan isn't the one for engine's work enforcing, it's only chimney flue succouring appliance.

3. Fan's technical data

Parameters	m.u.	WKO type		
		180	200	210
Rotation engine's speed	trn/min	2760	2760	2780
Engine's power	W	19	19	30
Power taking	W	38	38	48
Inlet-outlet diameter	mm	180	200	210
Rotor's exterior diameter	mm	175	175	175
Fan's weight excluding engine	kg	14	14	15
Fan's weight including engine	kg	16,5	16,5	18
Max temperature	°C	300	300	300
Max fan's efficiency	m ³ /h	400	400	400

4. Fan choice

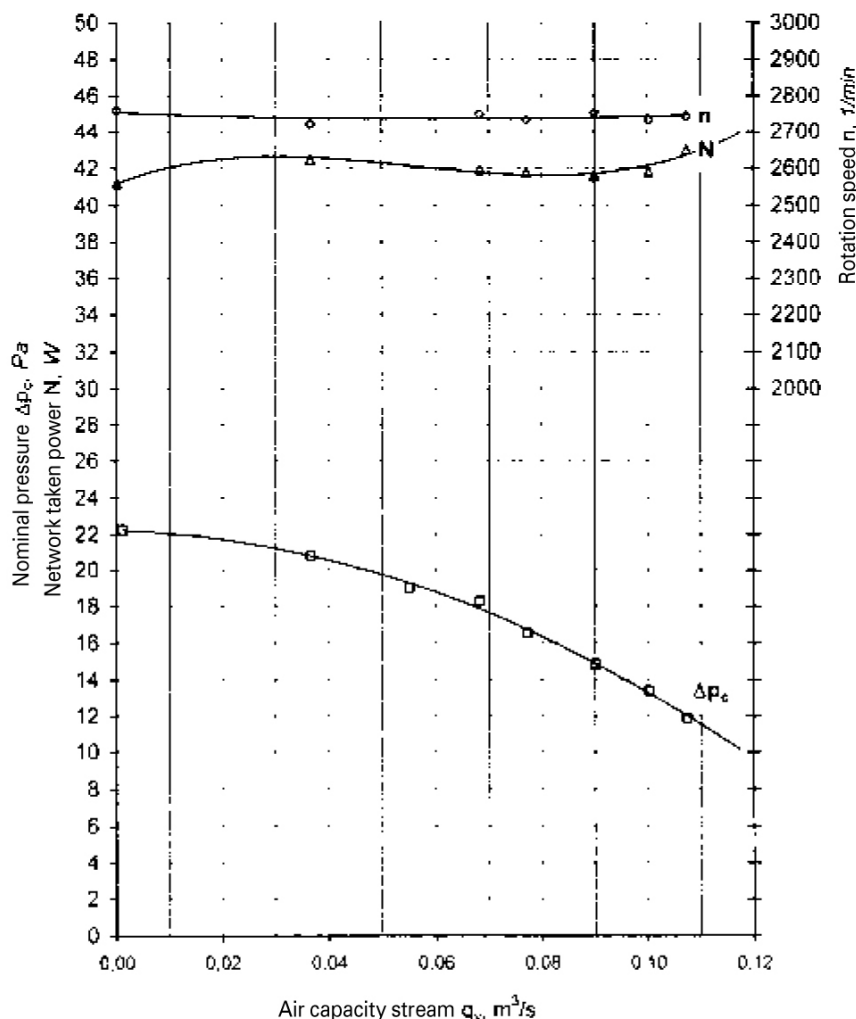
a) Boiler's flueblock diameter can't be larger than the fan's inlet-outlet diameter.

b) Chimney's hydraulic diameter (chimney incircled in chimney) cannot be smaller than chimney flue diameter.

5. Montage and exploitation

The fan is adapter for vertical or horizontal working. There are blades in rotor rings which are placed at the engine's rotor. Fans WKO type are characteristic for elements' unification. Certain fans' types differ with a slot fumes' taking.

The appliance should be assembled at chimney flue in conformity with fumes' taking arrow placed at fan's casing. Joints should be sealed with high temperature resistant silicone (up to 600°C).



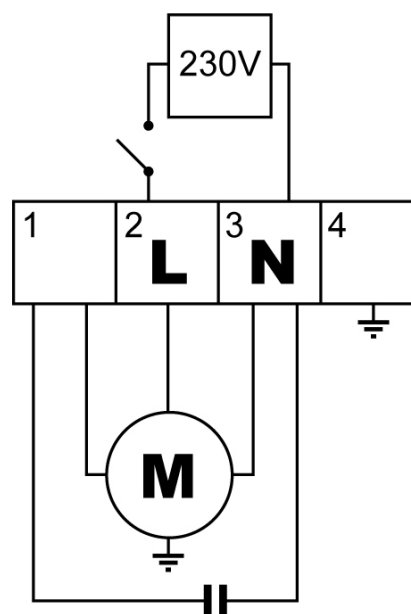
Pic. Fan's WKO type operating characteristics.

6. Electric connection scheme



NOTICE!

- Only an authorized electrician can deal with fan's WKO connection.
- Fan doesn't go with a cutout.
- Only an authorized electrician can deal with cutout assembling.
- Cutout should be placed in safe, out of unauthorized person reaching place. Switch however should be placed near a boiler. Because of fumes' temperature difference in the boilers automatic cutouts aren't advisable.



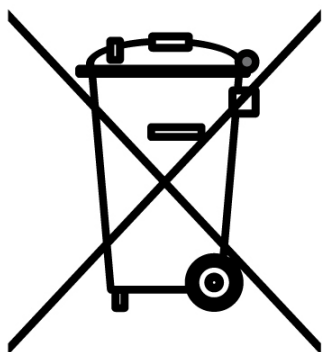
7. Maintenance

Fan should be inspected at least once a year. It should be done in an authorized point only.

8. Dealing with faults caused by wrong exploitation

Problem	Cause	Remedy suggested
Fan doesn't work	Fan's engine damaged	Call service
	Condenser damaged	Call service
	Rotor blocked	Fan's disassembly, clean the rotor
Fan works loud	Condenser damaged	Call service
	Fan's rotor uncleaned	Fan's disassembly, clean it through
Smog coming out of the fan's casing	Chimney flue choked	Call for chimney sweep as to clean the chimney through
	Fan's casing gasket damaged	Gasket's replacement

9. Using disposal



The appliance is approved according to the European Directive 2002/96/EC in the matter of electrical and electronic devices' waste (WEEE). Ensuring right its scrapping you help to protect the environment.

The symbol placed either on the device or in the documents enclosed means that the product isn't classified as a household waste.

Exhaust chimney fan should be taken to an authorized collection point in the matter of electric and electronic components recycling.

The appliance should be scrapped according to local regulations according waste utilization.

More informations according utilization, scrapping and recycling you can get in the local city hall, in civic waste utilization company or in the place of he machine buying.